



KMC 650

MOBILE SURGICAL FLUOROSCOPIC
X-RAY SYSTEM

The Power of Passion

GEMSS

Economical High Performance

The **KMC-650** is a **compact and economical C-arm system** suitable for various applications in neurosurgery, pain management, orthopedics and emergency rooms. With its 1K CCD camera, the KMC-650 produces excellent high-resolution images and promotes precise diagnosis and safe operation. User defined **Function Keys** provide **pre-sets for dose management and image calibration** per imaging area. The compact design and **wide C-arc** save space and increase flexibility, while the **expanded free space and 135° orbital rotation** increase patient access, decrease re-positioning and improve efficiency to assure the highest quality imaging and improved workflows in each clinical application.

◀ High-dynamic CCD camera for high resolution.

◀ High resolution B/W 19" LCD Medical grade monitors

◀ A larger 800mm free space and extended 135°(90° - 45°) orbital rotation reduce the need for re-positioning

◀ Stationary anode X-ray tube

◀ Powerful High Frequency generator and highly compact design for Improved mobility.

Optimized Workflow

- Compact design provides more free space for operation
- Capable of long time and multi-frame recording
- Supports multi-selection of frames/sec [max 30 frame]

Air Kerma
 DAP (Dose Area Product)
 Hand switch
 Foot switch
 * Thermal Printer
 * Cassette Holder
 * Grid
 * indicates optional item

Specifications at a Glance



High Frequency Generator
 40KHz



1K x 1K High Resolution CCD Camera



135° Wide Orbital Rotation With Large SID Distance



Lower Dose
 -Virtual collimator
 -Pulse mode
 -Air kerma
 -Laser guide



High Resolution B/W 19" LCD Medical Grade Monitors
 -1,000cd/m²



Easy Archiving And Documentation
 -DICOM 3.0
 -CD/DVD Burner
 -Thermal Printer
 -USB Port



Monoblock Type Tube



Three-field 9" Image Intensifier

Smart CX-View



Database Management
 -More convenient search & save capabilities
 -Manage patient information
 -Before & after surgery comparison



Unlimited Image Memory
 -Unlimited patient capacity
 -Unlimited study images



Versatile Diagnostic Tools
 -Zoom, contrast, reverse, invert
 -Filtering, edge enhancement
 -Annotation



PACS Connectivity With DICOM 3.0
 -Store and print, modality worklist management
 MPPS, storage commitment, and Import & export



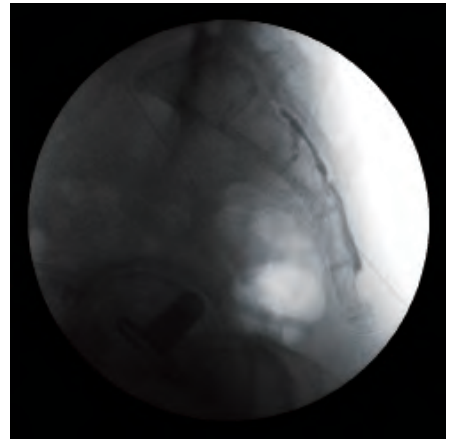
High-quality Imaging



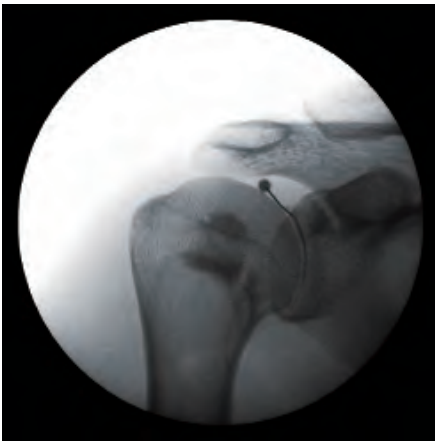
Spinal Fusion



Spine Root Block



Caudal Block



Shoulder Arthrography

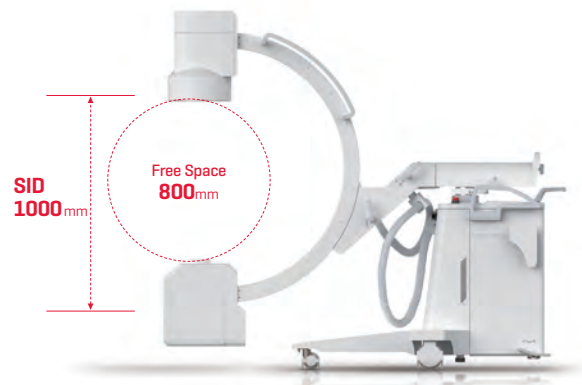
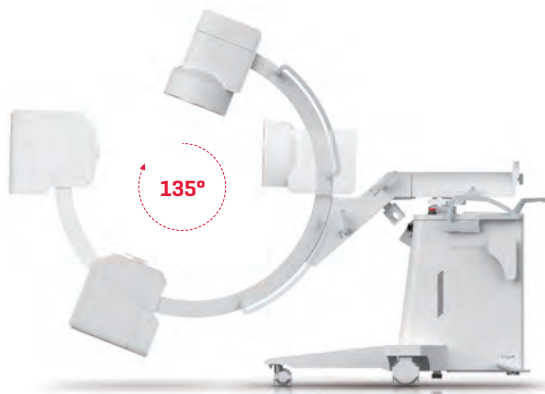


Metacarpal Bone ORIF



Ankle ORIF

Flexible Movement



GEMSS

GEMSS North America, Inc.

www.gemss-northamerica.com

KMC650-EN-1502

©GEMSS MEDICAL SYSTEMS reserves the right to make any changes in design and specifications contained herein without prior notice and will not be liable for any consequences resulting from the use of this publication. Any technical data contained in this document may vary within defined tolerances. Original images always lose a certain amount of data when reproduced. Please contact your local GEMSS sales representative for the most current information.